

MRC London Institute of Medical Sciences (LMS)

COVID-19 UPDATE

In these challenging times we continue to follow the latest Government and Public Health England (PHE) announcements and guidance on a daily basis. Due to the nature of our site being a large open area and the current works predominantly being machinery based operations, we can confirm that the MRC LMS site will remain open and will continue to operate in accordance with the appropriate Government and PHE advice. The recent installation of our new temporary site accommodation and welfare facilities also ensures we continue to provide a clean environment for our operatives with social distancing being enforced.

Please do not hesitate to contact us on the numbers below if you require any clarification of the current and upcoming works.

We wish everyone full health and to stay safe during these unprecedented times.

CONSTRUCTION UPDATE

For the off-plot HV cable diversion works, three of the four new cables have been re-jointed leaving only the standby generator cable to be completed. The jointing of this cable is dependent on ICHT progressing with their CHP upgrade works and the subsequent connections in the ICTEM switchroom and Energy Centre power supply. To do this, a standby generator is required which ICHT will confirm when this date will be.

To progress the MRC LMS site works it was agreed to continue with the re-opening of the Wolfson Road, leaving two jointing pits at the North and South ends of the road. Once the CHP upgrade works are advanced sufficiently, the jointing pits will be re-excavated and the cable jointing will then be completed over an agreed weekend with the standby generator in place.

The removal of the existing building foundations has continued to the northern section of the site.

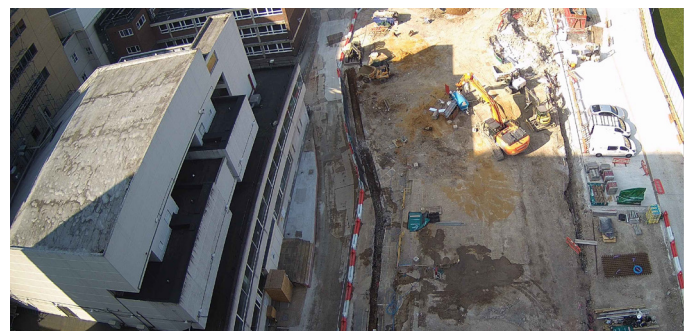
We are continuing to monitor noise, dust and vibration levels during these works, concentrating particularly on the heavy breaking works within the agreed periods to minimise impact on the surrounding stakeholders.

The temporary haul road has continued northwards with concreting being carried out to the section up to the Linford Christie Stadium boundary.

The temporary site accommodation units are now installed, with plumbing and electrical fit out works now complete. With the site accommodation and welfare facilities now live, we continue to operate in accordance with the Government advice.

UPCOMING WORKS

The removal of the below ground obstructions to the southern section of the site will commence now that the Wolfson Road is re-opened and the temporary road has been removed from across the site. The new drainage works will be connected into the existing retained sewer and HV cable diversion work jointing will continue in conjunction with the ICHT CHP works. The fit out of the site cabins will be completed and the haul road works continued.



Please contact the site team should you have any questions regarding the works.

Stuart Yates
Project Director
07584 408513

Alex Clark
Project Manager
07909 521786

Tom Murphy
Senior Site Manager
07740 488819

Project email
MRCLMS@walterlilly.co.uk

