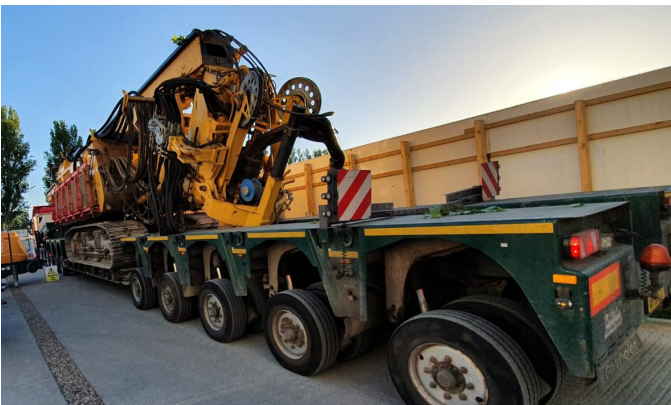


MRC London Institute of Medical Sciences (LMS)

CONSTRUCTION UPDATE

Piling operations have now commenced on programme. The piling rig was delivered to site at 6:00am due to the regulations around transporting abnormal loads. Our contractor spent a couple of days setting up their plant and equipment, and their first site operation was to complete the eight piles for our two tower crane bases. Once these were completed they moved onto the main works, piling in the north of the site working southwards, completing between 15 to 20 piles a day at depths of between 16 and 26m with a diameter of 600mm. Once the holes were drilled and concrete pumped in, steel reinforcement cages were lowered in to help provide solid foundations for the concrete frame of the building.



In this period we have also completed the removal of the Wolfson Building steps and the step free access lift. Once the steps were removed we temporarily reinstated the concrete road surface, ready for the pipe diversion works to the unplotted water main in the south west corner of the site.

ENVIRONMENTAL UPDATE

We are very pleased with our first crop from our environmental hoarding, these radishes will be going into a salad for our Friday social distancing Lunch Club!



UPCOMING WORKS

We will commence the excavation and concrete works to the two tower crane bases, ready for the crane erections on the weekends of 4 and 11 July 2020.

We will be moving our hoarding on Wolfson Road over to allow us to excavate further for the water main diversion, future attenuation tank and drainage installations.

We will be progressing the piling works moving into the southern half of the site.



Please contact the site team should you have any questions regarding the works.

Stuart Yates
Project Director
07584 408513

Alex Clark
Project Manager
07909 521786

Project email
MRCLMS@walterlilly.co.uk

