

## MRC London Institute of Medical Sciences (LMS)

### CONSTRUCTION UPDATE

In this period Keller successfully completed the 324 new piles to programme and have demobilised from the site.

Following completion of the piling works, Getjar commenced the excavation and pile cropping. They started this operation from the north end of the site working southwards. These works are sequentially followed by the installation of a layer of concrete blinding under slab services, a waterproofing layer, and then steel reinforcement bars in preparation for concrete pours, the first of which was completed on 16 July 2020. These works are progressing well, the site is excavated, and piles are cropped from Grid Line 2 down to Grid Line 18 with the waterproofing and reinforcement works following on sequentially.



The two crane bases were formed to allow the two tower cranes to be erected during the weekends of 4 July 2020 and 11 July 2020. These were independently inspected on 13 July 2020 and went into full operation on the same day.

During the period, two 11kVA generators were installed to the rear of the site. This is to allow the trust generator cable jointing to be completed in Wolfson Road. The jointing date has been set for the weekend of 1 August 2020.

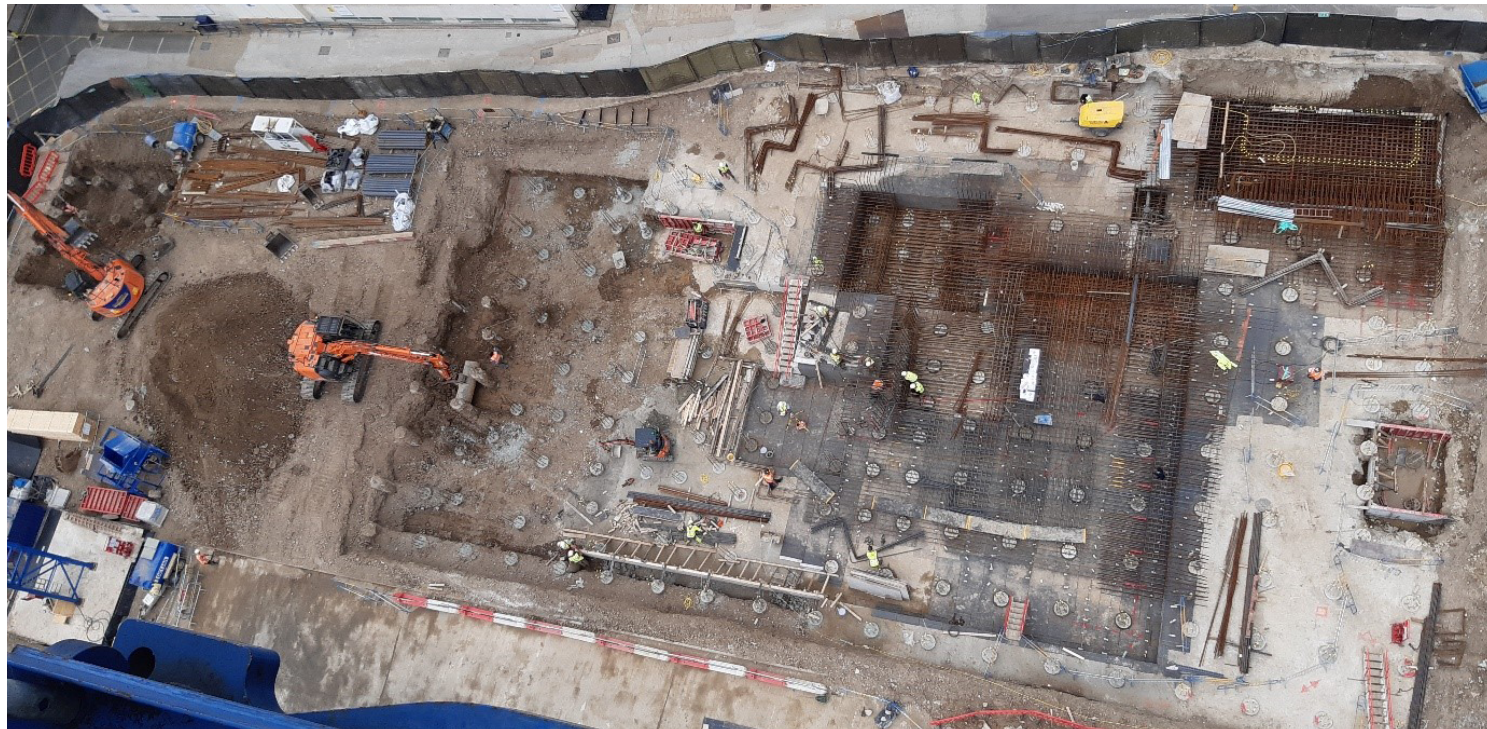


The fit out of the site accommodation has been further reviewed following revised Construction Leadership Council (CLC) advice to ensure social distancing and hand sanitising requirements are met in the office, the canteen and the welfare areas. Following this review, we have ordered two additional 32 foot long cabins as additional welfare space. This is in addition to other COVID-19 measures that have been implemented such as additional cleaning, sanitation stations, PPE, and temperature taking.

### UPCOMING WORKS

Upcoming works in the next period include continuing with under slab services, waterproofing, reinforcement and concrete to the Ground Floor slab and the installation of the first phase of lightning protection, this uses the reinforcement in the concrete frame to earth the building in the event of a lightning strike.





### SPOTLIGHT ON TOWER CRANES

The two tower cranes at MRC LMS are amongst the largest cranes that Walter Lilly have operated. Here are some stats on the cranes we have up on site:

Crane: Wolffkran 166B

Jib Length: 45 metres

Height: 45 metres +

Lifting capacity: 12,000kg

### DID YOU KNOW

The KROLL K-10000 has held the title of one of the world's largest tower cranes for over 40 years. Standing almost 400 feet tall with a 266 foot jib reach, the standard jib model can lift 120 tons at a radius of 269 feet. The long jib model can lift 94 tons to a radius of 330 feet. The K-10000 can rotate 360° once it has been bolted to its 40 foot diameter concrete base. This allows the crane to cover an area of 7.5 acres, or approximately six football fields.



### CONTACT US

Please contact the site team should you have any questions regarding the works.

**Stuart Yates - Project Director**

M: 07584 408513

**Alex Clark - Project Manager**

M: 07909 521786

**Project email**

MRCLMS@walterlilly.co.uk

[www.lbhf.gov.uk/planning](http://www.lbhf.gov.uk/planning). Reference number 2018/03667/FUL

Knollys House, 17 Addiscombe Road, Croydon CR0 6SR

020 8730 6200 | [www.walterlilly.co.uk](http://www.walterlilly.co.uk)

