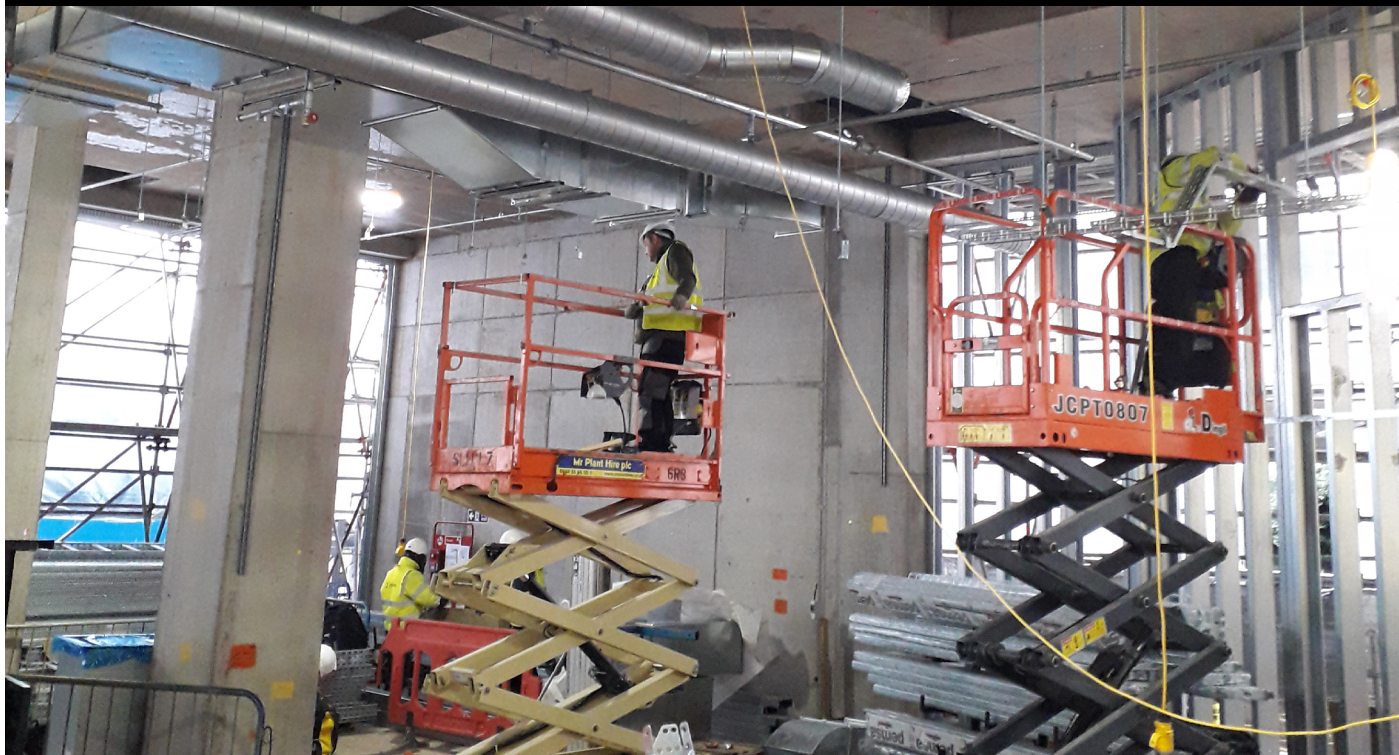


MRC London Institute of Medical Sciences (LMS)



CONSTRUCTION UPDATE

This week, we have carried out the final concrete pour to the seventh floor slab, and are now preparing shuttering and reinforcement for the eighth floor. The first of the four pours at this level are scheduled for the middle of next week. With one pour programmed per week, the eighth floor slab will be completed by the end of February.

The eighth floor is distinct from the previous floors as it includes holding-down bolts for the steelwork that will form the ninth floor and roof levels, and also includes forming the opening through the slab for the atrium rooflight.

Internally, works are progressing on several floors. The main plantroom on the ground floor is quickly being filled with ductwork, sprinkler pipework and electrical first fix support work. On the first and second floors, partition studwork is being fixed whilst floor screeding is also being installed.

The scaffold and monoflex sheeting is continuing up to the fifth and sixth floors of the façades, with the cladding

support framework currently being fitted to the second and third floors. Windows are being installed on the first floor.

HEALTH AND SAFETY UPDATE

The enlarged welfare facilities to accommodate the increasing number of operatives on site while maintaining required social distancing has been upgraded by a further four units in this period, culminating in 16 additional cabins.

The one-way system for access throughout the building and the external 'haki' scaffold now extends up to fifth floor level.

UPCOMING WORKS

By the next newsletter we will be midway through the eighth floor slab installation.

Services will continue up the risers and in the plantrooms, whilst screeding, laboratory partition studwork and façade boarding will also continue onto the next floors.

Please contact the site team should you have any questions regarding the works.

Stuart Yates
Project Director
07584 408513

Alex Clark
Project Manager
07909 521786

Project email
MRCLMS@walterlilly.co.uk

