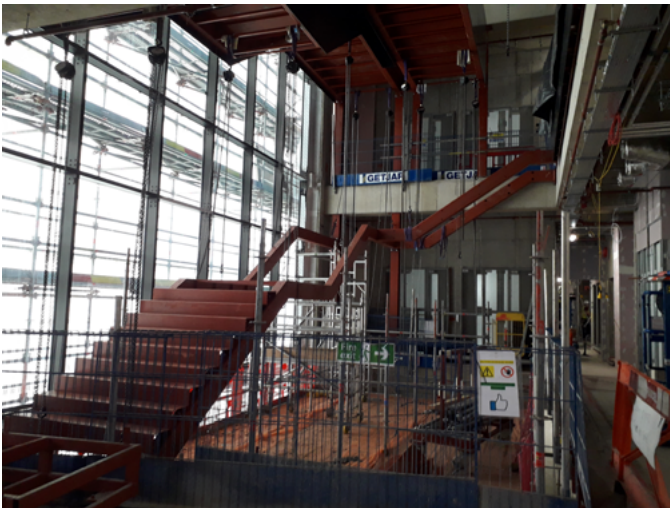


MRC London Institute of Medical Sciences (LMS)

CONSTRUCTION UPDATE

Over the last two weeks, the big event on site has been the dismantling and removal of one of the tower cranes. In the end, this had to be done over two weekends due to a thunderstorm in the area stopping work early on the first Sunday.

Work on site have progressed to the roof level with more of the first layer of ply boarding being laid over the metal decking. The temporary weathering measures were again severely tested due to the continued erratic weather we have been enduring recently, but again, they have withstood the downpours.



Now the screeding has been completed up to the eighth floor, more of the large items of equipment for the mechanical plant have been craned into position, and the pipework and first fix cable trays are being fixed.

With the internal works continuing to be mainly focused on the installation of the mechanical and electrical services, the dry liners continue to close up the walls and install



ceilings to the first floor in preparation for finishing trades.

The main atrium staircase is progressing from the fourth to third floor levels and the goods lift installation is complete and ready for final testing. Installation works have now commenced to the two passenger lifts in the main reception area.

Looking ahead, the primary focus is lifting the remainder of the major plant items up to eighth floor level before the second crane is dismantled at the end of the month. Internally the main focus remains on keeping the services installation progressing ahead of the partition and ceiling works.

COVID-19 UPDATE

We appear to be continuing to mirror the national trend for COVID-19 cases, positive tests and self-isolations. The on site personnel numbers had fallen from circa 350 down to 250 but are now back up to about 300.

We continue to follow the CLC guidance which advises a cautionary approach to “opening up” from 19 July and we continue with enhanced cleaning regimes and advise wearing of face coverings in enclosed spaces.

Please contact the site team should you have any questions regarding the works.

Stuart Yates
Project Director
07584 408513

Alex Clark
Project Manager
07909 521786

Project email
MRCLMS@walterlilly.co.uk

