

## MRC London Institute of Medical Sciences (LMS)



### CONSTRUCTION UPDATE

In this period, we have relocated our welfare and storage area from the Linford Christie Stadium area and began removing the temporary road and hardstandings in preparation to reinstate the area back to tennis courts and grassland.

We are continuing laying vinyl flooring to the main laboratories on the 2nd and 3rd floors and to the smaller rooms on the 1st floor, whilst assembly of the lab benching continues to both of the main labs on the 2nd floor.

Electrical second fix has commenced with dado trunking and wiring to sockets on the 1st floor and lights are being installed on the 2nd, 3rd and 4th floors.

The façade scaffold continues to be dismantled and this weekend the south and west elevations from 2nd to 1st floor will be struck. The north and east façades are already down to 1st floor and will be fully struck down to ground level in the next period.

All the curtain walling glazing to the atrium is now installed and assisting in keeping the temporary heating in the building, as the temperature needs to be maintained at higher levels for floor laying and joinery items. This has also allowed the wall boarding in the atrium staircase and reception area to be progressed.

The 7th floor ceiling hangers and perimeter bulkheads are being boarded and the plastering is now up to 6th floor, closely followed by the first mist coat painting to the walls.

In the plantrooms, the first commission tests have begun with witnessing of the booster sets in operation. In the ground and 8th floor main plantrooms; pipework, ductwork and cabling is continuing, and more elements of the installation are due to be tested, commissioned and witnessed for the thorough commissioning process.

### UPCOMING WORKS

In the next period vinyl flooring will continue to the 1st and 3rd floors, moving up to the 4th floor. Plastering will continue on the 6th floor and commence on the 7th, followed by the painter. The ceiling installation will follow and continue ahead of the flooring and the commissioning process will advance. Lab benching will proceed to the 1st and 3rd floors.

The site welfare accommodation has been reduced and relocated from the Linford Christie Stadium area to where the tower crane was however, we are closely following the latest news and government advice to move quickly if anything changes due to the Omicron variant of the covid virus.



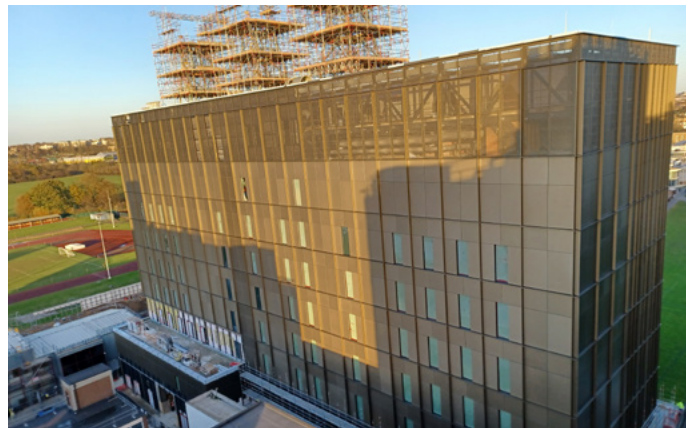
## MOVEMBER®

The month is up and three worthy souls managed to maintain their tashes until the end.

Well done to Jack, Ronnie and Ben.

Our Site Manager, Ronnie Dann has set up a charity funding page and has currently raised £380 and the link is below for any further donations which would be greatly appreciated.

[>MRC LMS Movember Fundraising<](#)



### CONTACT US

Please contact the site team should you have any questions regarding the works.

**Stuart Yates - Project Director**  
M: 07584 408513

**Alex Clark - Project Manager**  
M: 07909 521786

**Project email**  
MRCLMS@walterlilly.co.uk

[www.lbhf.gov.uk/planning](http://www.lbhf.gov.uk/planning). Reference number 2018/03667/FUL

Knollys House, 17 Addiscombe Road, Croydon CR0 6SR  
020 8730 6200 | [www.walterlilly.co.uk](http://www.walterlilly.co.uk)

